

TECH SUPPORT GUIDE

TecomC4

Migration to Network Access Controller

TecomC4

Summary

This document describes how to migrate doors off a 4DC over to NAC doors running standalone on TecomC4.

Pre-Requisites

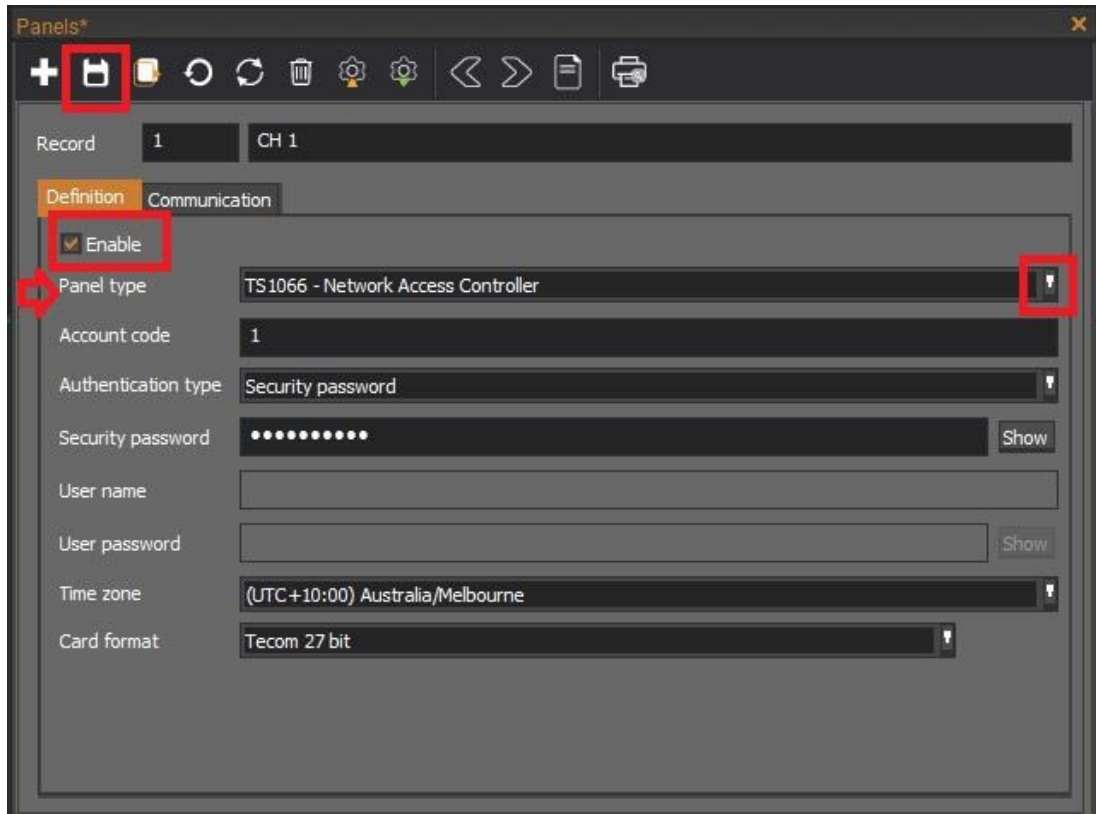
1. TecomC4 2019 SP1 or later
2. CTPlus 2.6 or later
3. Challenger panel (V8 / C10 / CH+), and 1 or more 4DC

Please be advised that it's required for the installer / technician to be TecomC4 and NAC trained to be able to follow the steps mentioned in this guide.

Steps to follow

1. Ensure you have already purchased NAC Hardware (TS1066 or TS1066-4) as well as NAC licensing for TecomC4.
2. Use CTPlus to configure NAC for direct mode

In CTPlus, go to “Connections”, click on “+” button to add a panel, this will open a new window as shown below. Select the Panel Type from the drop-down option to “TS1066 - Network Access Controller”, Enable the panel and Click on Save at top left of the page.



This will add the NAC in direct mode

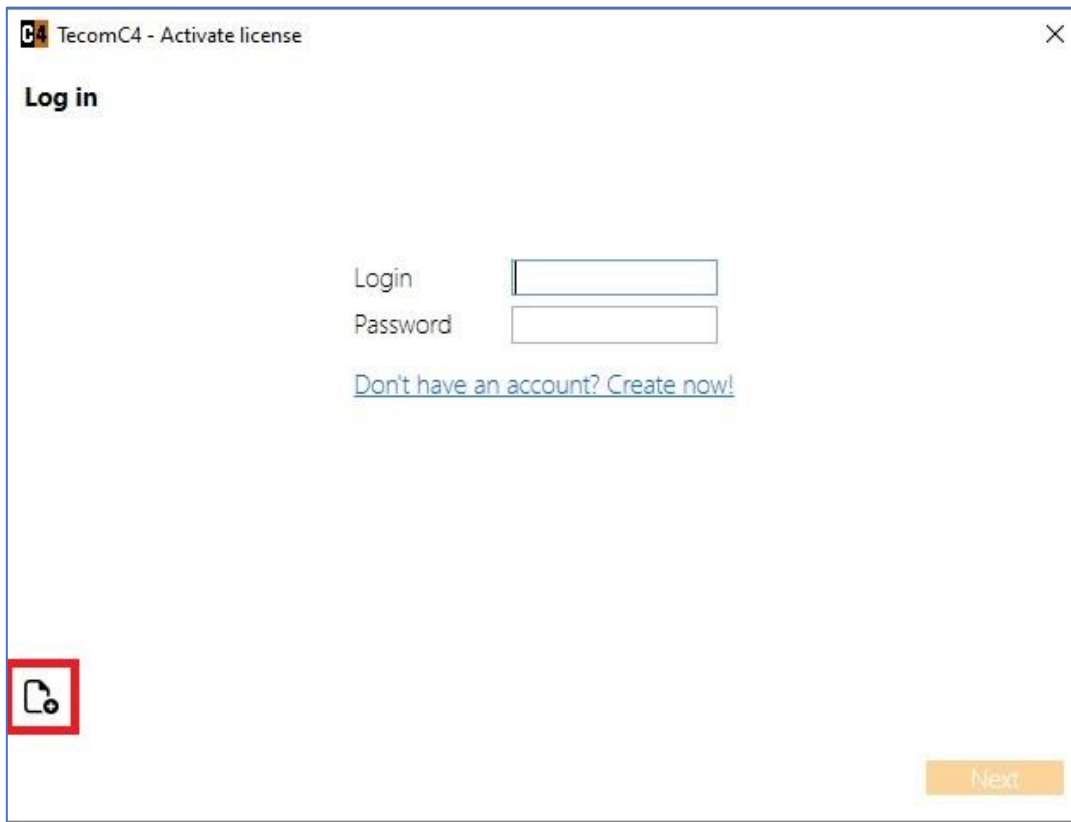
The screenshot shows the 'Connections' window in CTPlus. The table below shows the configuration for the NAC panel.

State	Connection	Command queue	Description	Account code	Endpoint	Firmware	Status
Enabled	Online	0	CH 1	1(1)	USB	V10-01.59090(NAC-Direct)	

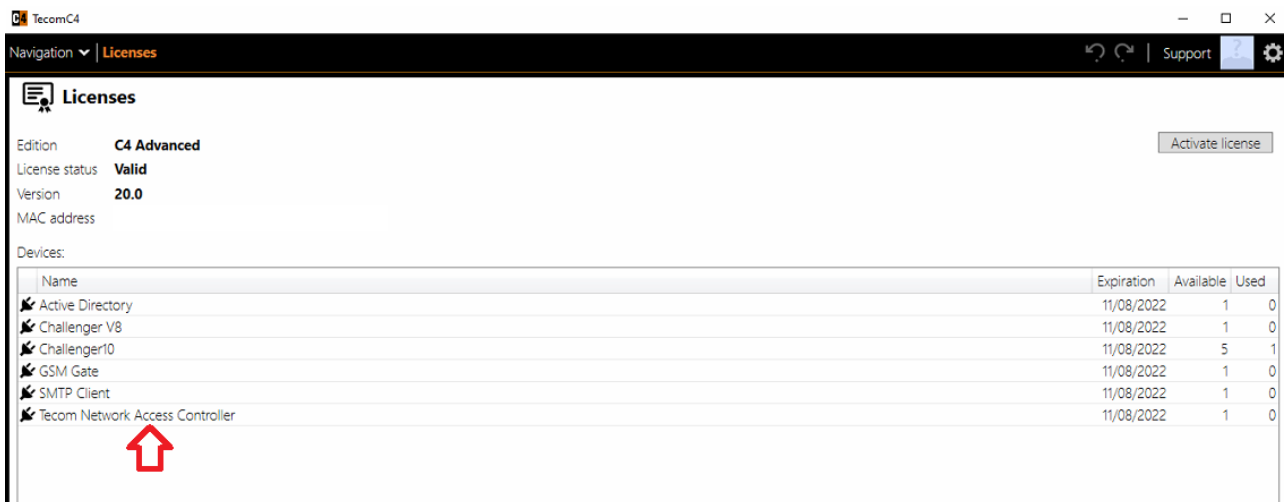
Note: Install the NAC Hardware as per the NAC Installation manual. Program the NAC's IP Communications in CTPlus. Configuration via keypad is not available for the Network Access Controller. Configuration must be done via software (CTPlus).

3. Apply license in TecomC4

In TecomC4, go to Navigation >Licenses, on the right-hand side of the page, click on “Activate License”



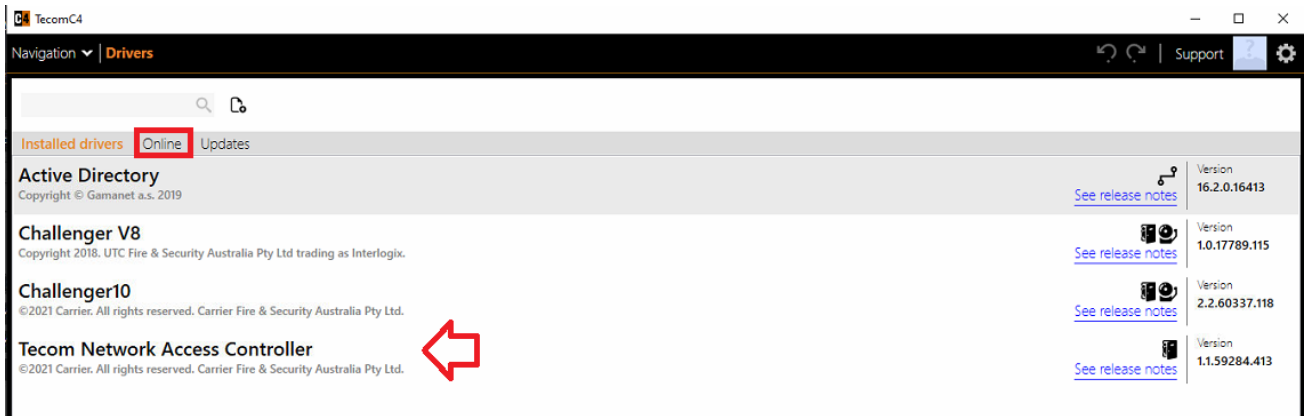
Click on the highlighted button from the picture and browse to the location of the license file. Select the license file and click on next. Once the license is added, you can verify from the device list as to which drivers you are licensed to install on TecomC4.



4. Add NAC driver

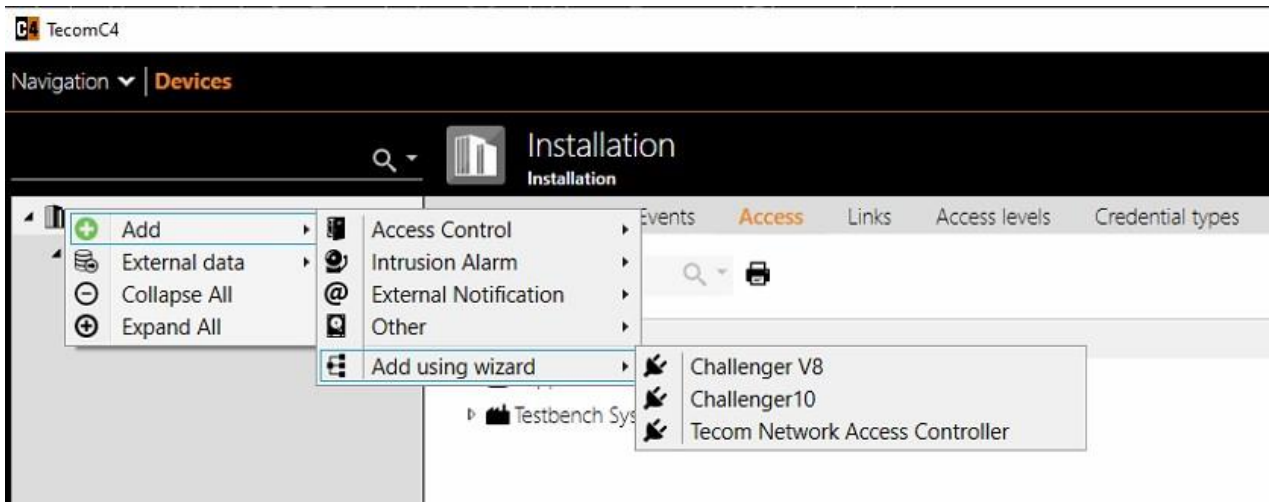
In TecomC4, click on Navigation > Drivers. Click on “Online” and it will give you a list of all the drivers, select “Tecom Network Access Controller” for the NAC and click on the “+” to add the driver to your TecomC4 system.

Once the driver is installed, it can be seen under “Installed Drivers”.

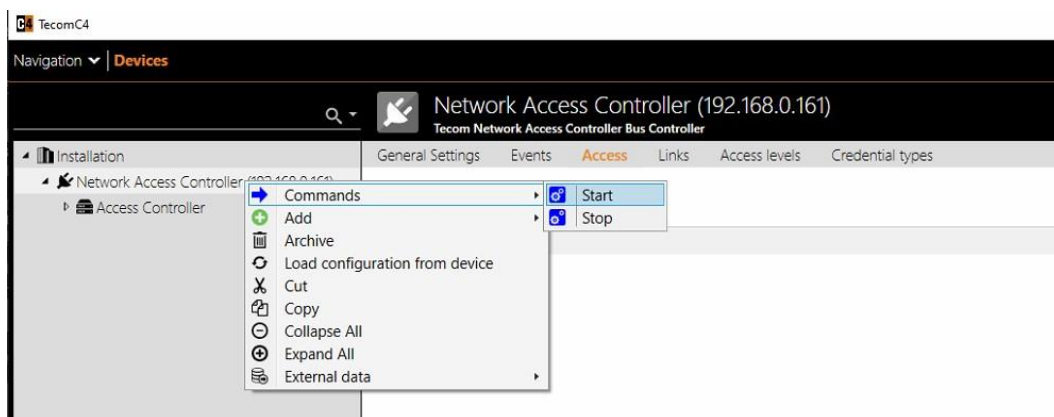
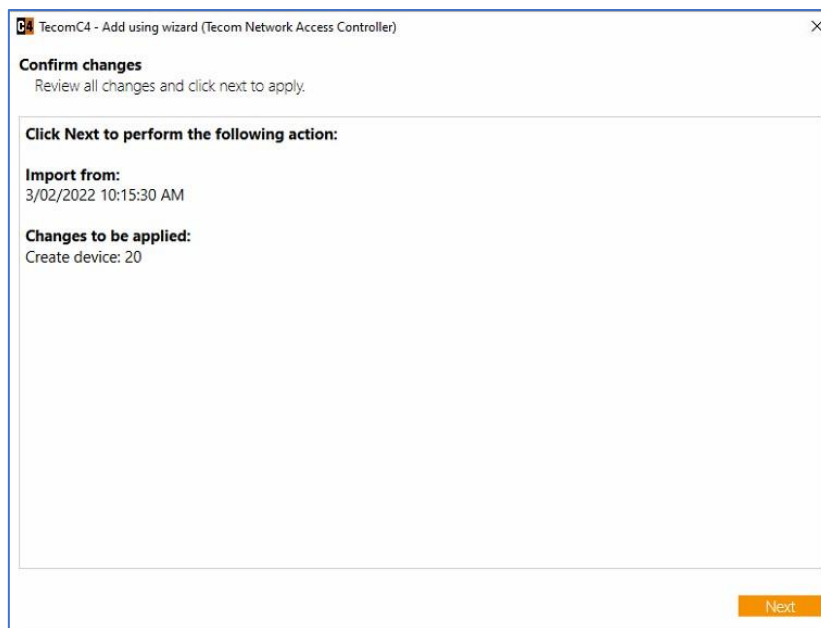
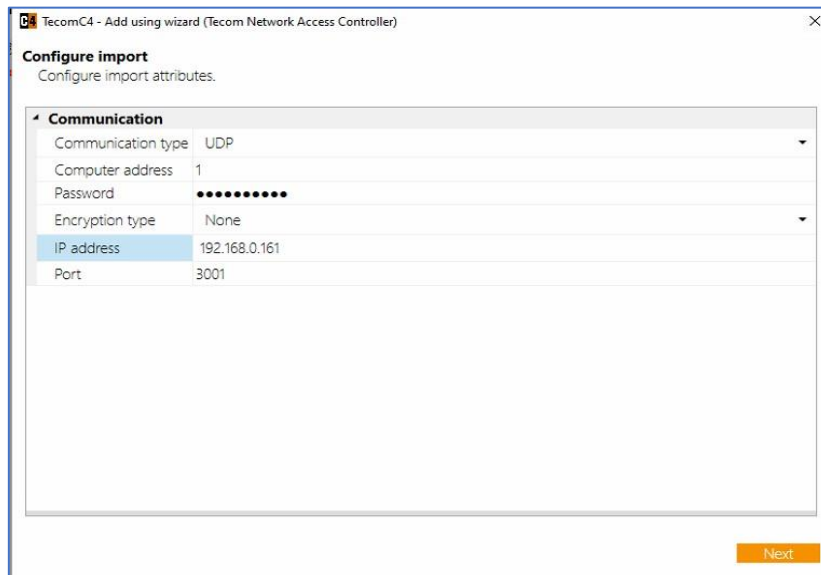


5. Add NAC using Wizard

Click on Navigation > Devices, Right click on the root level, select Add > Add using Wizard >Tecom Network Access Controller.

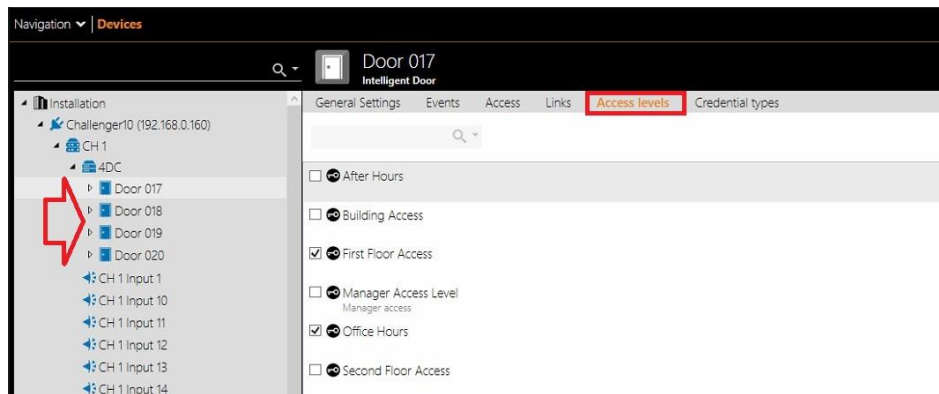


Enter the IP Address for the NAC and Port (You will need to set this up in CTPlus beforehand), Click on Next and it will bring up the changes to be applied and will give details of how many devices are being created, Click Next to add the NAC to the device tree in TecomC4.

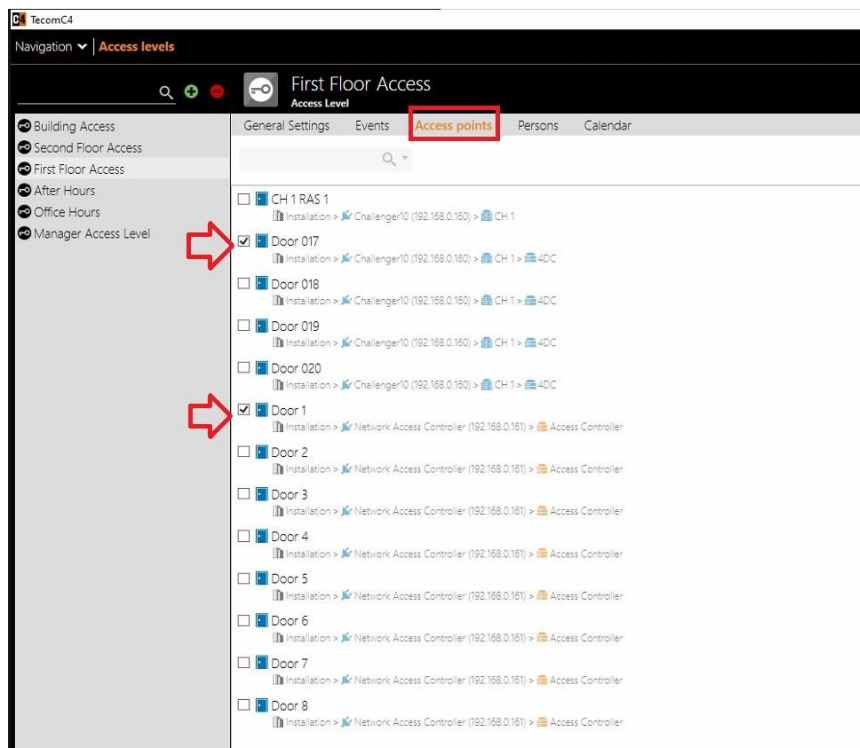


6. Click on each TS0867 door and note which access levels are assigned to each

Click on Navigation > Devices, select the 4DC (TS0867) that you would like to upgrade to NAC, for each door on the 4DC, note down the access levels assigned to them.



7. Now we need to assign the relevant doors to the access levels. Click on Navigation > Access Level, for each Access Level, update the relevant NAC doors (e.g., 4DC Door 17 is now NAC Door 1)



8. Once access levels are updated then perform a sync.



Now you have successfully migrated 4DC doors to NAC Doors.

9. Last step is to remove TS0867 from Challenger device list (archive -> remove)